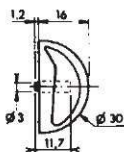
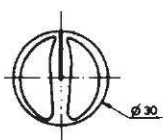
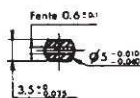


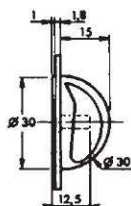
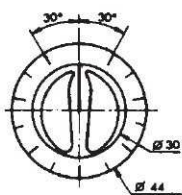
MANETTE M.63



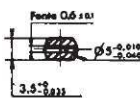
pour montage
sur axe
de section :



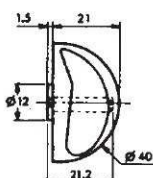
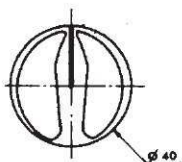
MANETTE MJ.63



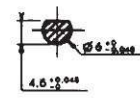
pour montage
sur axe
de section :



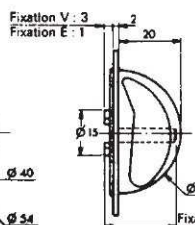
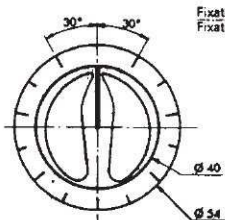
MANETTE M.53



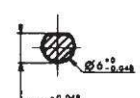
pour montage
sur axe
de section :



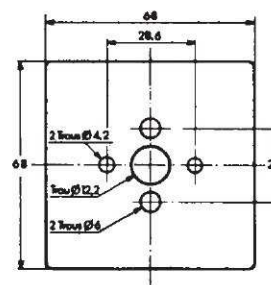
MANETTE M.53 + JUPE J.53



pour montage
sur axe
de section :

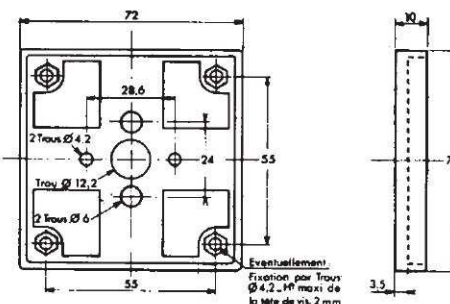


CADRAN 53

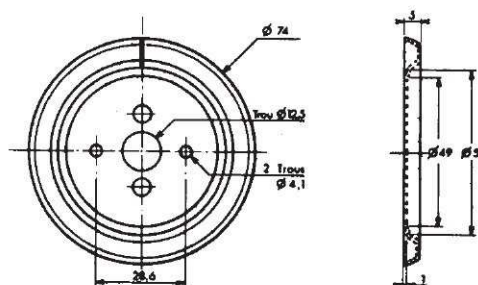


Nota : Pour utilisation avec Manette de \varnothing Maxi : 40 mm.

COLLERETTE 53



COLLERETTE 74



EXEMPLES D'HABILLAGES

APPAREILS	DESIGNATION	Epr. maxi panneau de fixation	Longueur des 2 vis en fixation V
C. 63	• Manette M.63 (pour modèles à remontage sur 180° et 330°)	3 mm	
	• Manette MJ.63 (pour modèles à remontage sur 330°)	3 mm	
C. 53	• Manette M.53	Fixation E : 5mm	Fixation V : 11 mm
	• Manette M.53 + Jupe J.53	5mm	8,5mm
	• Manette M.53 + Cadran 53	3mm	10 mm
	• Manette M.53 + Cadran 53 + Colletette 53	2mm	7 mm
	• Manette M.53 + Jupe J.53 + Colletette 74	3mm	8 mm